



شركة الاستثمار الوطنية  
NATIONAL INVESTMENTS COMPANY

## Bursa Kuwait – Daily Market Report MENA Securities – Research & Studies Dep.

15<sup>th</sup> November 2022



[www.nic.com.kw](http://www.nic.com.kw)

# DAILY MARKET COVERAGE REPORT

NIC MENA SECURITIES - RESEARCH AND STUDIES DEP



## Kuwait Market Watch

Tuesday, November 15, 2022

Index	Close	DTD Chg Net	DTD (%)	YTD (%)	52W High	52W Low	MKT CAP Bn (KD)	PBV (X)	PE (X)	DY (%)
All Share Index	7,659.66	15.22	0.20%	8.75%	8,472.15	6,788.83	45.51	2.01	38.54	3.92
Premier Index	8,586.01	7.79	0.09%	12.40%	9,437.37	7,343.90	35.96	2.22	36.33	4.34
Main Index	5,709.79	36.95	0.65%	-3.00%	6,600.62	5,190.37	9.55	1.21	46.86	2.34
NIC 50 Index	9,634.57	8.18	0.09%	13.05%	10,553.82	8,195.69	35.26	2.22	36.33	4.34

Index	Value Mn(KD)	Volume (Mn share)
All Share Index	51.19	281.17
Premier Index	28.91	72.58
Main Index	22.28	208.59
NIC 50 Index	47.37	216.58

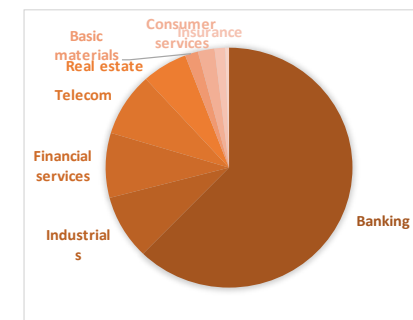
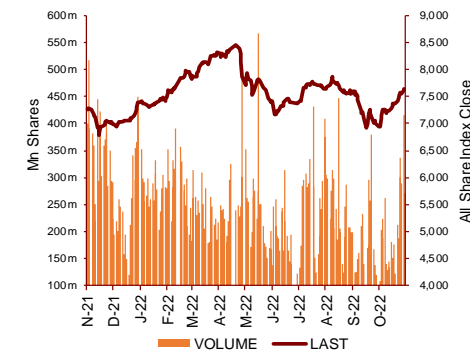
Market Breadth	UP ↑	Down ↓	No Chg ↔
All Share Index	63	50	41
Premier Index	10	11	4
Main Index	53	39	37
NIC 50 Index	22	23	5

Today's Top 5 Gainer %	Close KD	Value KD	DTD (%)
Warba Capital Holding	0.098	105,966	14.42%
Kuwait Projects Company Holdin	0.142	1,317,558	10.08%
Kuwait Reinsurance	0.284	43	9.65%
Al-Arabiya Real Estate	0.033	357,575	9.43%
Gulf Franchising Holding	0.094	2,766	9.18%

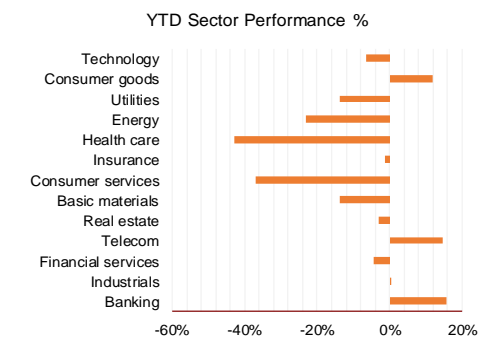
Today's Top 5 Loser %	Close KD	Value KD	DTD (%)
Al Massaleh Real Estate	0.031	19,901	-17.38%
Kuwait Remal Real Estate	0.008	17,356	-11.96%
Munshaat Real Estate Projct	0.057	2,479	-9.57%
Al Deera Holding	0.155	4,899	-8.82%
Al Masaken International Re	0.027	4,665	-6.92%

Today's Top 5 by Value	Close KD	Trade Val Mn(KD)	DTD (%)
Kuwait Finance House	0.868	6.00	0.00%
Mobile Telecommunications	0.622	3.76	0.16%
Agility Public Warehousing	0.804	3.59	-0.50%
Aayan Leasing and Investment	0.146	2.82	-2.67%
National Bank of Kuwait	1.129	2.80	-0.09%

Top 5 by Volume	Close KD	Trade Vol Mn(Shrs)	DTD (%)
GFH Financial Group	0.083	29.47	0.36%
Asiya Capital Investments	0.055	21.73	0.37%
Aayan Leasing and Investm	0.146	19.03	-2.67%
International Financial Advis	0.097	15.44	1.78%
Al-Arabiya Real Estate	0.033	11.46	9.43%



Sector	Close	DTD Chg Net	DTD (%)	YTD (%)	52W High	52W Low	MKT CAP Bn (KD)	PBV (X)	PE (X)	DY (%)
Banking	1,874.65	-0.480	-0.03%	15.6%	1,992.2	1,557.8	27.970	1.70	26.50	1.79
Industrials	1,140.88	-3.540	-0.31%	0.3%	1,443.6	976.3	3.896	1.01	27.19	3.81
Financial services	1,382.45	22.960	1.69%	-4.5%	1,678.3	1,190.4	3.922	1.07	88.66	2.77
Telecom	1,256.35	8.750	0.70%	14.5%	1,514.7	1,055.9	3.845	1.38	13.85	2.75
Real estate	1,286.81	2.480	0.19%	-3.2%	1,419.8	1,155.8	2.688	0.71	30.14	1.30
Basic materials	882.08	-0.680	-0.08%	-13.9%	1,233.3	800.8	0.769	1.21	9.06	6.12
Consumer services	463.61	2.380	0.52%	-36.9%	767.8	443.8	0.982	2.26	31.53	2.07
Insurance	1,559.01	44.570	2.94%	-1.2%	1,675.7	1,434.5	0.621	0.91	44.96	5.31
Health care	454.28	0.000	0.00%	-43.0%	821.7	420.4	0.225	15.72	12.05	1.22
Energy	1,098.99	0.620	0.06%	-23.1%	1,506.8	975.7	0.223	0.83	21.29	2.21
Utilities	521.05	2.630	0.51%	-13.6%	639.5	494.7	0.218	1.83	16.28	9.14
Consumer goods	1,487.66	-6.710	-0.45%	11.8%	1,641.0	1,208.7	0.140	0.97	36.78	2.17
Technology	634.38	-5.820	-0.91%	-6.4%	800.3	539.1	0.009	0.78	NM	-
	7,659.66	15.22	0.20%	8.8%	8,472.2	6,788.8	45.51	2.01	38.54	3.92



# DAILY MARKET COVERAGE REPORT

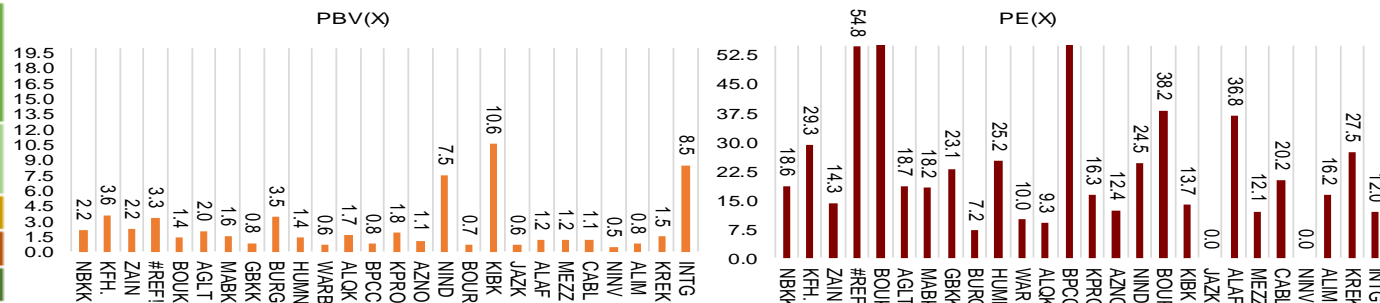
## NIC MENA SECURITIES - RESEARCH AND STUDIES DEP



### Premier Market

Tuesday, November 15, 2022

Premier Market	Price			Valuation Multiples			MKT Cap	Price Performance		Trading Indicators		ROE	ROA	52 Week (KD)		MKT Cap
	Close (KD)	Day Δ	Day % Δ	PBV(X)	PE(X)	DY%	Mn KD	MTD(%)	YTD (%)	Value (Mn KD)	(Mn Shrs)	(%)	(%)	High	Low	%
National Bank of Kuwait	1.129	-0.001	-0.09%	2.17	18.61	2.15	8,527	5%	19%	2.80	2.48	11.7%	1.5%	1.143	0.903	23.71%
Kuwait Finance House	0.868	0.000	0.00%	3.58	29.28	1.26	11,485	7%	15%	6.00	6.92	12.4%	1.6%	1.039	0.720	31.94%
Mobile Telecommunications	0.622	0.001	0.16%	2.24	14.31	5.31	2,691	4%	5%	3.76	6.03	15.7%	4.3%	0.698	0.564	7.48%
Boubyan Bank	0.842	0.000	0.00%	3.34	54.78	0.54	3,148	2%	18%	0.19	0.23	6.8%	0.8%	0.965	0.681	8.75%
Agility Public Warehousing	0.804	-0.004	-0.50%	1.37	61.75	2.06	2,031	2%	2%	3.59	4.47	2.7%	2.2%	1.062	0.634	5.65%
Mabane Co.	0.903	0.000	0.00%	1.99	18.69	1.46	1,121	4%	21%	0.43	0.48	11.1%	5.5%	0.910	0.717	3.12%
Gulf Bank	0.346	-0.004	-1.14%	1.57	18.16	1.90	1,107	1%	30%	0.85	2.44	8.9%	0.9%	0.385	0.230	3.08%
Burgan Bank	0.232	0.003	1.31%	0.84	23.06	2.08	762	6%	-3%	0.35	1.52	3.8%	0.7%	0.307	0.205	2.12%
Human Soft Holding	3.430	0.001	0.03%	3.45	7.23	11.67	417	2%	6%	0.06	0.02	49.6%	34.9%	3.704	3.006	1.16%
Warba Bank	0.250	-0.003	-1.19%	1.37	25.23	0.00	500	4%	-9%	1.41	5.60	5.8%	0.6%	0.298	0.216	1.39%
Qurain Petrochemical Industries	0.261	0.000	0.00%	0.64	9.98	6.90	280	4%	-25%	0.00	0.00	6.4%	5.2%	0.403	0.210	0.78%
Boubyan Petrochemical	0.821	-0.001	-0.12%	1.68	9.29	7.30	428	3%	-4%	0.26	0.31	19.1%	10.1%	1.125	0.769	1.19%
Kuwait Projects Company Holding	0.142	0.013	10.08%	0.75	364.10	3.88	347	20%	0%	1.32	9.73	0.2%	0.1%	0.215	0.112	0.97%
Shamal Az-Zour Al-Oula Power & Water	0.198	0.001	0.51%	1.83	16.28	9.14	218	3%	-13%	0.11	0.56	14.8%	2.7%	0.242	0.188	0.61%
National Industries Group Holding	0.247	-0.002	-0.80%	1.09	12.44	4.46	531	6%	3%	2.18	8.76	5.3%	2.9%	0.314	0.207	1.48%
Boursa Kuwait Securities Co	2.351	0.001	0.04%	7.53	24.46	2.77	472	4%	16%	0.33	0.14	32.4%	22.9%	2.870	1.800	1.31%
Kuwait International Bank	0.212	0.003	1.44%	0.67	38.20	1.84	225	12%	1%	1.29	6.12	1.7%	0.3%	0.259	0.186	0.63%
Jazeera Airways	1.800	-0.010	-0.55%	10.64	13.74	2.54	396	8%	40%	0.61	0.34	92.1%	11.6%	2.099	0.981	1.10%
Alafco Aviation Lease and Finance	0.172	0.002	1.18%	0.64	NM	0.00	164	2%	-21%	0.20	1.17	-15.9%	-3.4%	0.251	0.162	0.46%
Mezzan Holding	0.367	0.005	1.38%	1.17	36.78	4.33	114	1%	-36%	0.56	1.53	-7.2%	-2.8%	0.608	0.345	0.32%
Gulf Cable and Electrical Industries	1.300	-0.014	-1.07%	1.20	12.05	4.57	271	8%	49%	0.39	0.30	11.0%	NM	1.850	0.860	0.75%
National Investments	0.274	0.001	0.37%	1.12	20.16	16.48	218	15%	25%	0.41	1.49	5.4%	4.4%	0.475	0.201	0.61%
Alimtia Investment Group	0.081	-0.003	-3.21%	0.48	NM	10.70	83	9%	-31%	0.14	1.69	-0.9%	-0.4%	0.138	0.069	0.23%
Kuwait Real Estate	0.111	-0.001	-0.89%	0.81	16.23	2.60	103	1%	-36%	0.96	8.62	4.9%	1.9%	0.187	0.097	0.29%
Integrated Holding	0.360	-0.002	-0.55%	1.49	27.52	2.76	91	10%	-3%	0.50	1.39	5.4%	3.4%	0.478	0.321	0.25%
ALI ALGanim	0.835	-0.004	-0.48%	8.49	12.02	5.67	229	5%	nm	0.23	0.27	30.5%	12.1%	0.966	0.750	0.64%
<b>Total</b>		<b>7.79</b>	<b>0.09%</b>	<b>2.22</b>	<b>36.33</b>	<b>4.34</b>	<b>35,959</b>	<b>4.7%</b>	<b>12.4%</b>	<b>28.91</b>	<b>72.31</b>					<b>100%</b>



# DAILY MARKET COVERAGE REPORT

## NIC MENA SECURITIES - RESEARCH AND STUDIES DEP



Premier Market Company	Price			Valuation Multiples			MKT Cap Mn KD	Price Performance		ROE (%)	ROA (%)
	Close (KD)	Day Δ	Day % Δ	PBV(X)	PE(X)	DY%		MTD (%)	YTD (%)		
National Bank of Kuwait	1.129	-0.001	-0.09%	2.17	18.6	2.15	8,527	4.7%	18.9%	11.7%	1.5%
Kuwait Finance House	0.868	0.000	0.00%	3.58	29.3	1.26	11,485	7.2%	14.8%	12.4%	1.6%
Mobile Telecommunications	0.622	0.001	0.16%	2.24	14.3	5.31	2,691	3.8%	4.5%	15.7%	4.3%
Boubyan Bank	0.842	0.000	0.00%	3.34	54.8	0.54	3,148	2.2%	18.2%	6.8%	0.8%
Agility Public Warehousing	0.804	-0.004	-0.50%	1.37	61.8	2.06	2,031	2.2%	2.1%	2.7%	2.2%
Mabane Co.	0.903	0.000	0.00%	1.99	18.7	1.46	1,121	3.6%	20.7%	11.1%	5.5%
Gulf Bank	0.346	-0.004	-1.14%	1.57	18.2	1.90	1,107	1.5%	30.2%	8.9%	0.9%
Burgan Bank	0.232	0.003	1.31%	0.84	23.1	2.08	762	6.0%	-2.9%	3.8%	0.7%
Human Soft Holding	3.430	0.001	0.03%	3.45	7.2	11.67	417	2.0%	6.4%	49.6%	34.9%
Warba Bank	0.250	-0.003	-1.19%	1.37	25.2	0.00	500	3.7%	-8.8%	5.8%	0.6%
Qurain Petrochemical Industries	0.261	0.000	0.00%	0.64	10.0	6.90	280	3.6%	-24.8%	6.4%	5.2%
Boubyan Petrochemical	0.821	-0.001	-0.12%	1.68	9.3	7.30	428	3.0%	-3.6%	19.1%	10.1%
Kuwait Projects Company Holding	0.142	0.013	10.08%	0.75	364.1	3.88	347	20.3%	0.0%	0.2%	0.1%
Shamal Az-Zour Al-Oula Power & Water	0.198	0.001	0.51%	1.83	16.3	9.14	218	2.6%	-13.2%	14.8%	2.7%
National Industries Group Holding	0.247	-0.002	-0.80%	1.09	12.4	4.46	531	5.6%	2.5%	5.3%	2.9%
Boursa Kuwait Securities Co	2.351	0.001	0.04%	7.53	24.5	2.77	472	4.3%	16.4%	32.4%	22.9%
Kuwait International Bank	0.212	0.003	1.44%	0.67	38.2	1.84	225	12.2%	1.1%	1.7%	0.3%
Jazeera Airways	1.800	-0.010	-0.55%	10.64	13.7	2.54	396	7.7%	39.5%	92.1%	11.6%
Alafco Aviation Lease and Finance	0.172	0.002	1.18%	0.64	NM	0.00	164	2.4%	-21.1%	-15.9%	-3.4%
Mezzan Holding	0.367	0.005	1.38%	1.17	36.8	4.33	114	0.8%	-36.4%	-7.2%	-2.8%
Gulf Cable and Electrical Industries	1.300	-0.014	-1.07%	1.20	12.1	4.57	271	7.9%	49.3%	11.0%	9.0%
National Investments	0.274	0.001	0.37%	1.12	20.2	16.48	218	14.6%	25.1%	5.4%	4.4%
Alimtiq Investment Group	0.081	-0.003	-3.21%	0.48	NM	10.70	83	9.1%	-31.0%	-0.9%	-0.4%
Kuwait Real Estate	0.111	-0.001	-0.89%	0.81	16.2	2.60	103	0.9%	-36.1%	4.9%	1.9%
Integrated Holding	0.360	-0.002	-0.55%	1.49	27.5	2.76	91	10.4%	-2.7%	5.4%	3.4%
ALI ALGanim	0.835	-0.004	-0.48%	4.19	12.0	5.67	229	5.0%	nm	30.5%	12.1%
<b>Total</b>		<b>7.79</b>	<b>0.09%</b>	<b>2.22</b>	<b>36.33</b>	<b>4.34</b>	<b>35,731</b>	<b>4.7%</b>	<b>12.4%</b>		

Discription	Close (KD)	Day Δ	Day % Δ	50 Day	200 Day	14 Day	Mn KD	MTD(%)	YTD (%)	High	Low
Premier Index	8,586	7.79	0.09%	8,205	8,472	88	35,731	4.7%	12.3%	9,437	7,344

### Top 5 Performrs (Today's Price Change)

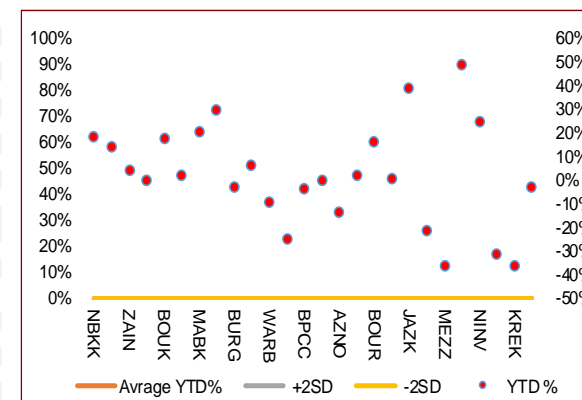
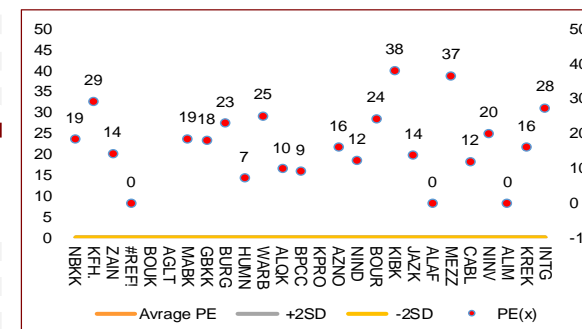
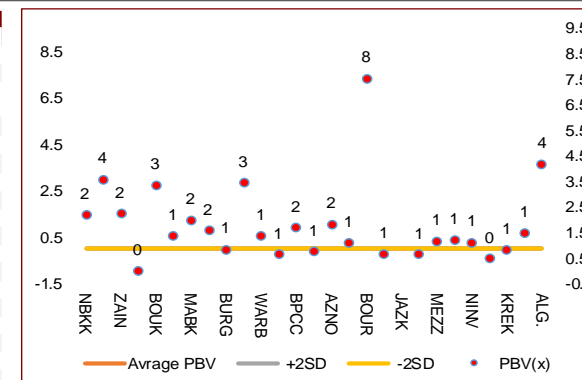
Kuwait Projects Company Holding	0.142	0.013	10.08%	0.131	0.161	87	347	20.3%	0.0%	0.215	0.112
Kuwait International Bank	0.212	0.003	1.44%	0.200	0.218	90	225	12.2%	1.1%	0.259	0.186
Mezzan Holding	0.367	0.005	1.38%	0.380	0.479	48	114	0.8%	-36.4%	0.608	0.345
Burgan Bank	0.232	0.003	1.31%	0.226	0.252	89	762	6.0%	-2.9%	0.307	0.205
Alafco Aviation Lease and Finance	0.172	0.002	1.18%	0.177	0.200	36	164	2.4%	-21.1%	0.251	0.162

### Middel Performrs (Today's Price Change)

Shamal Az-Zour Al-Oula Power & Water	0.198	0.001	0.51%	0.196	0.210	75	218	2.6%	-13.2%	0.242	0.188
National Investments	0.274	0.001	0.37%	0.254	0.316	84	218	14.6%	25.1%	0.475	0.201
Mobile Telecommunications	0.622	0.001	0.16%	0.592	0.611	83	2,691	3.8%	4.5%	0.698	0.564
Boursa Kuwait Securities Co	2.351	0.001	0.04%	2.242	2.388	77	472	4.3%	16.4%	2.870	1.800
Human Soft Holding	3.430	0.001	0.03%	3.337	3.327	79	417	2.0%	6.4%	3.704	3.006
Kuwait Finance House	0.868	0.000	0.00%	0.838	0.876	87	11,485	7.2%	14.8%	1.039	0.720
Ahli United Bank BSC	#N/A	#N/A	#N/A	0.305	0.290	50	#N/A	#N/A	#N/A	0.336	0.240
Boubyan Bank	0.842	0.000	0.00%	0.810	0.813	81	3,148	2.2%	18.2%	0.965	0.681
Mabane Co.	0.903	0.000	0.00%	0.869	0.822	74	1,121	3.6%	20.7%	0.910	0.717
Qurain Petrochemical Industries	0.261	0.000	0.00%	0.100	0.100	64	280	3.6%	-24.8%	1.210	0.996
National Bank of Kuwait	1.129	-0.001	-0.09%	1.048	1.044	82	8,527	4.7%	18.9%	1.143	0.903
Agility Public Warehousing	0.804	-0.004	-0.50%	0.751	0.854	66	2,031	2.2%	2.1%	1.062	0.634
Integrated Holding	0.360	-0.002	-0.55%	0.362	0.397	73	91	10.4%	-2.7%	0.478	0.321
National Industries Group Holding	0.247	-0.002	-0.80%	0.240	0.258	73	531	5.6%	2.5%	0.314	0.207

### Bottom 5 Performrs (Today's Price Change)

Kuwait Real Estate	0.111	-0.001	-0.89%	0.110	0.141	55	103	0.9%	-36.1%	0.187	0.097
Gulf Cable and Electrical Industries	1.300	-0.014	-1.07%	1.210	1.350	88	271	7.9%	49.3%	1.850	0.860
Gulf Bank	0.346	-0.004	-1.14%	0.331	0.325	63	1,107	1.5%	30.2%	0.385	0.230
Warba Bank	0.250	-0.003	-1.19%	0.238	0.259	72	500	3.7%	-8.8%	0.298	0.216
Alimtiq Investment Group	0.081	-0.003	-3.21%	0.080	0.105	66	83	9.1%	-31.0%	0.138	0.069



# DAILY MARKET COVERAGE REPORT

## NIC MENA SECURITIES - RESEARCH AND STUDIES DEP



Banking Sector		Price			Valuation Multiples			MKT Cap	Price Performance		Trading Indicators		ROE	ROA	52 Week (KD)		MKT Cap
Company	Close (KD)	Day Δ	Day % Δ	PBV(X)	PE(X)	DY%	Mn KD	MTD(%)	YTD (%)	Value (Mn KD)	(Mn Shrs)	(%)	(%)	High	Low	%	
National Bank of Kuwait	1.129	-0.001	-0.09%	2.17	18.61	2.15	8,527	4.7%	18.9%	2.80	2.48	11.7%	1.5%	1.143	0.903	18.74%	
Kuwait Finance House	0.868	0.000	0.00%	3.58	29.28	1.26	11,485	7.2%	14.8%	6.00	6.92	12.4%	1.6%	1.039	0.720	25.24%	
Boubyan Bank	0.842	0.000	0.00%	3.34	54.78	0.54	3,148	2.2%	18.2%	0.19	0.23	6.8%	0.8%	0.965	0.681	6.92%	
Commercial Bank of Kuwait	0.480	0.000	0.00%	1.14	11.96	4.17	951	-1.2%	-4.2%	0.00	0.00	9.9%	1.9%	0.549	0.456	2.09%	
Gulf Bank	0.346	-0.004	-1.14%	1.57	18.16	1.90	1,107	1.5%	30.2%	0.85	2.44	8.9%	0.9%	0.385	0.230	2.43%	
Burgan Bank	0.232	0.003	1.31%	0.84	23.06	2.08	762	6.0%	-2.9%	0.35	1.52	3.8%	0.7%	0.307	0.205	1.67%	
Ahli United Bank	0.298	0.000	0.00%	1.01	26.28	1.60	671	11.6%	1.3%	0.75	2.52	3.8%	0.8%	0.324	0.250	1.47%	
Warba Bank	0.250	-0.003	-1.19%	1.37	25.23	0.00	500	3.7%	-8.8%	1.41	5.60	5.8%	0.6%	0.298	0.216	1.10%	
Al Ahli Bank of Kuwait	0.336	0.003	0.90%	0.99	22.08	1.43	595	1.5%	38.9%	0.27	0.83	4.5%	0.6%	0.355	0.216	1.31%	
Kuwait International Bank	0.212	0.003	1.44%	0.67	38.20	1.84	225	12.2%	1.1%	1.29	6.12	1.7%	0.3%	0.259	0.186	0.49%	
<b>Total Banking Sector - 10 Companies</b>							<b>27,970</b>			<b>13.91</b>	<b>28.64</b>					<b>61.46%</b>	
Basic Materials		Price			Valuation Multiples			MKT Cap	Price Performance		Trading Indicators		ROE	ROA	52 Week (KD)		MKT Cap
Company	Close (KD)	Day Δ	Day % Δ	PBV(X)	PE(X)	DY%	Mn KD	MTD(%)	YTD (%)	Value (Mn KD)	(Mn Shrs)	(%)	(%)	High	Low	%	
Qurain Petrochemical Industries	0.261	0.000	0.00%	0.64	9.98	6.90	280	3.57%	-24.78%	0.00	0.00	6.4%	5.2%	0.403	0.210	0.62%	
Boubyan Petrochemical	0.821	-0.001	-0.12%	1.68	9.29	7.30	428	3.01%	-3.64%	0.26	0.31	19.1%	10.1%	1.125	0.769	0.94%	
Al Kout Industrial Projects	0.390	0.000	0.00%	1.28	4.49	10.26	39	0.00%	-21.37%	0.00	0.00	31.0%	21.9%	0.545	0.390	0.09%	
Kuwait Foundry	0.293	-0.001	-0.34%	1.22	12.48	0.00	21	1.03%	-20.60%	0.00	0.00	10.7%	10.3%	0.424	0.260	0.05%	
<b>Total Basic Materials - 4 Companies</b>							<b>769</b>			<b>0.26</b>	<b>0.31</b>					<b>1.69%</b>	
Consumer Goods		Price			Valuation Multiples			MKT Cap	Price Performance		Trading Indicators		ROE	ROA	52 Week (KD)		MKT Cap
Company	Close (KD)	Day Δ	Day % Δ	PBV(X)	PE(X)	DY%	Mn KD	MTD(%)	YTD (%)	Value (Mn KD)	(Mn Shrs)	(%)	(%)	High	Low	%	
Mezzan Holding	0.367	0.005	1.38%	1.17	36.78	4.33	114	0.8%	-36.4%	0.56	1.53	-7.2%	-2.8%	0.608	0.345	0.25%	
Livestock Transport and Trading	0.125	-0.004	-3.10%	0.77	NM	0.00	26	4.2%	-31.3%	0.00	0.01	-14.5%	-8.2%	0.188	0.112	0.06%	
<b>Total Consumer Goods - 2 Companies</b>							<b>140</b>			<b>0.56</b>	<b>1.53</b>					<b>0.31%</b>	
Consumer Services		Price			Valuation Multiples			MKT Cap	Price Performance		Trading Indicators		ROE	ROA	52 Week (KD)		MKT Cap
Company	Close (KD)	Day Δ	Day % Δ	PBV(X)	PE(X)	DY%	Mn KD	MTD(%)	YTD (%)	Value (Mn KD)	(Mn Shrs)	(%)	(%)	High	Low	%	
Jazeera Airways	1.800	-0.010	-0.55%	10.64	13.74	2.54	396	7.7%	39.5%	0.61	0.34	92.1%	11.6%	2.099	0.981	0.87%	
Kuwait National Cinema	1.010	-0.003	-0.30%	1.20	10.79	2.96	94	11.2%	14.5%	0.01	0.01	11.6%	5.3%	1.040	0.850	0.21%	
Oula Fuel Marketing	0.147	-0.003	-2.00%	0.93	15.67	3.33	59	1.4%	-5.8%	0.00	0.01	5.6%	2.9%	0.168	0.140	0.13%	
Al Soor Fuel Marketing	0.151	0.000	0.00%	0.89	19.26	3.31	61	1.3%	-2.6%	0.32	2.10	4.8%	3.6%	0.167	0.142	0.13%	
Sultan Center Food Products	0.115	-0.001	-0.86%	0.66	0.92	0.00	32	3.6%	-45.2%	0.03	0.22	74.2%	12.2%	0.250	0.103	0.07%	
Jiyad Holding	0.026	0.000	-0.76%	0.30	NM	0.00	5	18.7%	-67.8%	0.07	2.59	-16.2%	-10.9%	0.094	0.015	0.01%	
IFA Hotels and Resorts	0.032	0.000	0.62%	4.26	215.33	0.00	21	19.6%	-39.6%	0.14	4.22	2.0%	0.4%	0.073	0.025	0.05%	
Kuwait Resorts	0.086	-0.001	-0.81%	0.56	12.08	3.40	17	12.2%	-11.1%	0.17	2.01	4.8%	4.2%	0.106	0.067	0.04%	
Future Kid Entertainment and Real Estate	0.130	0.006	4.84%	1.12	11.37	0.00	14	12.1%	65.2%	0.16	1.23	10.4%	4.7%	0.133	0.074	0.03%	
Al Eid Food	0.243	0.000	0.00%	1.86	14.47	2.81	41	1.7%	5.3%	0.05	0.20	13.4%	10.2%	0.304	0.207	0.09%	
Kuwait Hotels	0.170	0.000	0.00%	2.04	21.12	2.94	10	4.3%	142.9%	0.00	0.00	9.9%	6.4%	0.201	0.070	0.02%	
Palms Agro Production	0.078	0.000	0.00%	0.79	NM	0.00	4	0.0%	14.4%	0.00	0.00	-13.8%	-10.9%	0.083	0.043	0.01%	
ALI ALGanim	0.835	-0.004	-0.48%	4.19	12.02	5.67	229	5.0%	nm	0.23	0.27	30.5%	12.1%	0.966	0.750	0.50%	
<b>Total Consumer Services - 13 Companies</b>							<b>982</b>			<b>1.78</b>	<b>13.20</b>					<b>2.16%</b>	



# DAILY MARKET COVERAGE REPORT

## NIC MENA SECURITIES - RESEARCH AND STUDIES DEP



Financial Services	Price			Valuation Multiples			MKT Cap	Price Performance		Trading Indicators		ROE	ROA	52 Week (KD)		MKT Cap
Company	Close (KD)	Day Δ	Day % Δ	PBV(X)	PE(X)	DY%	Mn KD	MTD(%)	YTD (%)	Value (Mn KD)	(Mn Shrs)	(%)	(%)	High	Low	%
Egypt Kuwait Holding	0.377	-0.001	-0.26%	2.20	5.95	5.65	425	-1.6%	-11.1%	0.32	0.85	37.1%	17.5%	0.458	0.353	0.93%
Kuwait Projects Company Holding	0.142	0.013	10.08%	0.75	364.10	3.88	347	20.3%	0.0%	1.32	9.73	0.2%	0.1%	0.215	0.112	0.76%
National Industries Group Holding	0.247	-0.002	-0.80%	1.09	12.44	4.46	531	5.6%	2.5%	2.18	8.76	5.3%	2.9%	0.314	0.207	1.17%
Boursa Kuwait Securities Co	2.351	0.001	0.04%	7.53	24.46	2.77	472	4.3%	16.4%	0.33	0.14	32.4%	22.9%	2.870	1.800	1.04%
GFH Financial Group	0.083	0.000	0.36%	0.95	9.87	4.41	288	6.2%	-15.9%	2.44	29.47	9.4%	1.2%	0.109	0.073	0.63%
National Investments	0.274	0.001	0.37%	1.12	20.16	16.48	218	14.6%	25.1%	0.41	1.49	5.4%	4.4%	0.475	0.201	0.48%
Tamdeen Investment	0.625	0.000	0.00%	0.67	16.36	1.60	213	13.6%	64.9%	0.00	0.00	4.4%	3.5%	0.625	0.309	0.47%
Alimtiq Investment Group	0.081	-0.003	-3.21%	0.48	NM	10.70	83	9.1%	-31.0%	0.14	1.69	-0.9%	-0.4%	0.138	0.069	0.18%
Commercial Facilities	0.183	0.004	2.23%	0.59	9.04	8.38	93	4.0%	-11.2%	0.01	0.05	6.5%	3.6%	0.228	0.165	0.20%
Aayan Leasing and Investment	0.146	-0.004	-2.67%	1.08	13.83	0.00	97	14.1%	-11.8%	2.82	19.03	8.2%	6.0%	0.204	0.104	0.21%
Kuwait Investment	0.144	0.005	3.60%	0.71	30.00	17.99	79	9.1%	-48.8%	0.41	2.88	2.2%	2.1%	0.304	0.113	0.17%
Noor Financial Investment	0.199	0.006	3.11%	1.25	5.62	2.49	101	10.6%	-21.8%	0.11	0.55	22.0%	16.2%	0.295	0.163	0.22%
Arzan Financial Group for Financing and Investment	0.130	0.001	0.78%	0.90	9.57	1.87	104	-1.5%	-16.4%	0.78	6.04	9.4%	7.0%	0.180	0.109	0.23%
Kuwait Financial Centre	0.114	0.000	0.00%	0.56	8.62	8.35	57	6.5%	-33.9%	0.05	0.41	6.9%	4.0%	0.190	0.101	0.13%
Gulf Investment House	0.399	0.009	2.31%	3.80	1,596.00	0.00	162	0.0%	33.0%	0.02	0.05	0.2%	0.6%	0.422	0.217	0.36%
Arabi Group Holdings	0.293	-0.011	-3.62%	1.75	NM	0.00	48	2.1%	0.7%	0.16	0.55	-29.0%	-4.0%	0.499	0.169	0.11%
Kuwait and Middle East Financial Investment	0.105	0.006	6.38%	0.91	14.13	7.09	23	-21.1%	-30.0%	0.12	1.19	7.5%	5.2%	0.175	0.091	0.05%
Privatization Holding	0.037	0.001	3.03%	0.31	NM	0.00	23	1.4%	-31.8%	0.03	0.71	-7.1%	-5.5%	0.063	0.032	0.05%
Asiya Capital Investments	0.055	0.000	0.37%	0.50	3.46	0.00	42	22.7%	5.0%	1.23	21.73	15.5%	15.2%	0.071	0.037	0.09%
Umm Al Qaiwain General Investment Co	0.096	0.000	0.00%	0.54	5.84	5.20	35	2.4%	10.4%	0.00	0.00	9.8%	8.1%	0.108	0.086	0.08%
Securities House	0.067	0.000	0.00%	0.69	12.28	0.00	28	12.9%	-32.4%	0.07	0.99	5.5%	4.7%	0.109	0.052	0.06%
Kamco Investment	0.104	-0.001	-0.95%	0.58	6.00	9.52	36	5.1%	-19.4%	0.09	0.86	9.8%	4.6%	0.167	0.089	0.08%
First Investment	0.083	-0.004	-4.03%	0.76	94.77	0.00	37	11.5%	-1.0%	0.22	2.60	0.8%	0.8%	0.104	0.068	0.08%
Inovest BSC Public	0.098	0.002	2.20%	0.00	NM	0.00	29	26.4%	-17.2%	0.34	3.48	2.9%	1.8%	0.189	0.070	0.06%
Coast Investment and Development	0.084	0.001	0.96%	0.86	26.27	6.02	39	8.8%	-20.2%	0.00	0.04	3.2%	3.1%	0.126	0.066	0.09%
Al Madar Investment	0.109	0.000	0.00%	1.03	63.74	0.00	23	11.2%	-8.4%	0.00	0.00	1.6%	1.7%	0.120	0.083	0.05%
Bayan Investment	0.041	0.000	0.00%	0.31	NM	0.00	13	0.1%	-28.7%	0.00	0.00	-2.4%	-1.5%	0.067	0.036	0.03%
Al Manar Financing and Leasing	0.062	0.001	1.15%	0.61	20.10	0.00	16	2.0%	-1.0%	0.00	0.00	2.9%	2.3%	0.079	0.049	0.04%
Manazel Holding	0.030	0.001	2.71%	0.66	10.38	0.00	13	11.0%	-40.8%	0.06	2.15	6.2%	2.0%	0.060	0.025	0.03%
Kuwait Finance and Investment	0.066	0.001	1.38%	0.49	28.65	0.00	20	4.6%	-24.1%	0.00	0.01	1.7%	1.6%	0.097	0.055	0.04%
National International Holding	0.114	-0.002	-1.72%	0.69	15.66	4.18	25	3.6%	-22.8%	0.06	0.48	4.1%	2.8%	0.167	0.091	0.05%
Osoul Investment	0.090	0.000	0.00%	0.82	NM	11.82	11	0.7%	9.6%	0.00	0.00	-4.4%	-4.0%	0.118	0.062	0.02%
UniCap Investment and Finance	0.055	0.000	0.00%	0.61	64.71	0.00	12	-0.9%	-19.7%	0.01	0.20	1.9%	0.2%	0.085	0.050	0.03%
Amar Finance and Leasing	0.063	0.000	0.00%	0.58	3.42	0.00	12	0.0%	-3.8%	0.00	0.01	18.6%	17.3%	0.081	0.058	0.03%
Gulf North Africa Holding	0.172	0.012	7.50%	1.72	59.40	0.00	20	16.2%	99.8%	0.66	3.94	3.0%	2.4%	0.141	0.057	0.04%
International Financial Advisors	0.097	0.002	1.78%	0.63	39.12	0.00	24	12.0%	-13.8%	1.51	15.44	1.9%	0.7%	0.127	0.082	0.05%
Credit Rating and Collection	0.015	0.000	0.00%	0.54	NM	0.00	3	-3.7%	-61.7%	0.00	0.00	-0.5%	-0.4%	0.069	0.014	0.01%
Ekttitab Holding	0.011	-0.001	-5.88%	0.37	NM	0.00	4	4.7%	-47.4%	0.01	1.11	-17.2%	-13.2%	0.021	0.009	0.01%
Kuwait Syrian Holding Co	0.037	0.000	0.00%	0.36	5.95	0.00	7	8.5%	-13.8%	0.00	0.00	8.7%	6.2%	0.059	0.026	0.01%
Warba Capital Holding	0.098	0.012	14.42%	1.09	NM	0.00	10	15.4%	14.4%	0.11	1.11	-0.8%	-0.7%	0.118	0.070	0.02%
National Consumer Holding	0.127	0.003	2.42%	5.75	NM	0.00	38	14.4%	5.9%	1.29	10.26	-8.0%	-7.5%	0.158	0.097	0.08%
Al Deera Holding	0.155	-0.015	-8.82%	1.04	7.81	0.00	14	-7.2%	-22.5%	0.00	0.03	12.5%	6.5%	0.200	0.145	0.03%
AL Safat Investment	0.123	0.001	0.82%	1.57	NM	0.00	35	25.0%	0.9%	0.69	5.69	-1.8%	-1.6%	0.270	0.091	0.08%
Gulf Franchising Holding	0.094	0.008	9.18%	1.19	3.53	0.00	4	14.6%	-2.0%	0.00	0.03	40.5%	13.1%	0.148	0.063	0.01%
<b>Total Financial Services - 44 Companies</b>							<b>3,916</b>			<b>18.00</b>	<b>153.72</b>					<b>8.61%</b>

# DAILY MARKET COVERAGE REPORT

## NIC MENA SECURITIES - RESEARCH AND STUDIES DEP



Health Care	Price			Valuation Multiples			MKT Cap	Price Performance		Trading Indicators		ROE	ROA	52 Week (KD)		MKT Cap
Company	Close (KD)	Day Δ	Day % Δ	PBV(X)	PE(X)	DY%	Mn KD	MTD(%)	YTD (%)	Value (Mn KD)	(Mn Shrs)	(%)	(%)	High	Low	%
Al-Maidan Clinic for Oral Health Services	0.694	0.000	0.00%	2.75	15.27	0.00	156	-0.1%	-49.6%	0.00	0.00	19.4%	12.5%	1.400	0.556	0.34%
Advanced Technology	0.409	0.000	0.00%	0.91	8.84	3.67	61	-18.0%	-21.0%	0.00	0.00	10.7%	2.1%	0.595	0.409	0.13%
Yiaco Medical	0.450	0.000	0.00%	43.51	NM	0.00	8	0.0%	2.7%	0.00	0.00	-161.7%	-4.7%	0.480	0.399	0.02%
<b>Total Health Care - 3 Companies</b>							<b>225</b>			<b>0.00</b>	<b>0.00</b>					<b>0.49%</b>

Industrials	Price			Valuation Multiples			MKT Cap	Price Performance		Trading Indicators		ROE	ROA	52 Week (KD)		MKT Cap
Company	Close (KD)	Day Δ	Day % Δ	PBV(X)	PE(X)	DY%	Mn KD	MTD(%)	YTD (%)	Value (Mn KD)	(Mn Shrs)	(%)	(%)	High	Low	%
Agility Public Warehousing	0.804	-0.004	-0.50%	1.37	61.75	2.06	2,031	2.2%	2.1%	3.59	4.47	2.7%	2.2%	1.062	0.634	4.46%
Human Soft Holding	3.430	0.001	0.03%	3.45	7.23	11.67	417	2.0%	6.4%	0.06	0.02	49.6%	34.9%	3.704	3.006	0.92%
Alafco Aviation Lease and Finance	0.172	0.002	1.18%	0.64	NM	0.00	164	2.4%	-21.1%	0.20	1.17	-15.9%	-3.4%	0.251	0.162	0.36%
Kuwait Cement	0.231	-0.003	-1.28%	0.85	163.83	2.14	165	9.5%	0.0%	0.02	0.11	0.5%	0.3%	0.295	0.194	0.36%
Gulf Cable and Electrical Industries	1.300	-0.014	-1.07%	1.20	12.05	4.57	271	7.9%	49.3%	0.39	0.30	11.0%	9.0%	1.850	0.860	0.59%
Integrated Holding	0.360	-0.002	-0.55%	1.49	27.52	2.76	91	10.4%	-2.7%	0.50	1.39	5.4%	3.4%	0.478	0.321	0.20%
Kuwait Portland Cement	0.816	0.005	0.62%	1.14	17.07	8.63	82	-2.3%	-16.7%	0.02	0.03	6.8%	5.3%	1.240	0.751	0.18%
Educational Holding Group	2.350	-0.100	-4.08%	3.99	8.93	21.75	49	-4.1%	-41.3%	0.00	0.00	30.0%	17.2%	4.431	2.300	0.11%
United Projects for Aviation Services	0.211	0.011	5.50%	0.76	45.57	0.00	80	3.4%	-14.9%	0.00	0.00	1.7%	1.0%	0.298	0.182	0.18%
Heavy Engineering Industries and Shipbuilding	0.694	-0.005	-0.72%	1.83	22.99	2.86	125	11.0%	36.3%	0.08	0.11	8.1%	3.2%	0.960	0.442	0.27%
National Industries	0.190	-0.007	-3.55%	0.78	11.98	5.08	66	-0.5%	-1.6%	0.04	0.20	6.5%	4.7%	0.260	0.181	0.15%
ACICO Industries	0.089	-0.003	-3.07%	0.40	NM	0.00	29	-2.4%	-36.3%	0.06	0.69	-1.9%	-0.5%	0.208	0.076	0.06%
Kuwait Company for Process Plant Construction a	0.305	0.001	0.33%	1.19	17.13	8.15	36	-0.7%	-35.7%	0.01	0.05	6.9%	4.1%	0.513	0.286	0.08%
Ras Al Khaimah for White Cement and Constructii	0.140	0.000	0.00%	1.22	33.52	5.92	70	0.0%	11.1%	0.00	0.00	3.6%	3.0%	0.175	0.113	0.15%
Combined Group Contracting	0.400	0.003	0.76%	1.41	7.63	6.30	68	-2.4%	13.0%	0.20	0.49	26.3%	5.8%	0.500	0.308	0.15%
Kuwait and Gulf Link Transport	0.063	0.005	8.45%	0.37	3.40	0.00	17	9.4%	-7.8%	0.10	1.55	11.6%	2.6%	0.089	0.054	0.04%
Shuaiba Industrial	0.154	0.002	1.32%	0.85	12.81	7.89	15	3.4%	-31.6%	0.02	0.14	6.6%	5.4%	0.310	0.137	0.03%
National Cleaning	0.038	0.002	5.26%	0.30	NM	0.00	9	1.3%	-33.2%	0.01	0.18	-13.9%	-4.1%	0.066	0.031	0.02%
Fujairah Cement Industries	0.038	0.000	0.00%	0.21	NM	0.00	13	-2.1%	-30.4%	0.00	0.00	-12.7%	-6.3%	0.060	0.028	0.03%
Mubarrad Holding	0.085	-0.001	-0.70%	0.65	9.00	5.83	14	6.5%	-22.5%	0.03	0.39	7.3%	6.5%	0.120	0.071	0.03%
Specialities Group Holding	0.112	0.001	0.90%	0.59	12.17	6.12	18	21.9%	-9.9%	0.35	3.10	5.0%	3.6%	0.152	0.076	0.04%
Salbookh Trading	0.016	0.000	0.00%	0.49	NM	0.00	2	-13.0%	-62.9%	0.00	0.00	-51.7%	-28.6%	0.057	0.016	0.00%
Metal and Recycling	0.093	-0.004	-4.54%	1.20	NM	0.00	8	2.5%	-2.6%	0.00	0.00	-12.0%	-2.0%	0.113	0.060	0.02%
Equipment Holding	0.045	-0.002	-3.26%	0.71	NM	0.00	4	39.1%	-18.3%	0.00	0.08	-11.1%	-3.2%	0.075	0.030	0.01%
Jassim Transport & Stevedoring	0.339	0.008	2.42%	1.15	14.78	4.83	51	3.0%	-16.7%	0.01	0.12	8.0%	6.3%	0.410	0.300	0.11%
<b>Total Industrials - 24 Companies</b>							<b>3,896</b>			<b>5.70</b>	<b>14.58</b>					<b>8.56%</b>

# DAILY MARKET COVERAGE REPORT

## NIC MENA SECURITIES - RESEARCH AND STUDIES DEP



Insurance	Price			Valuation Multiples			MKT Cap	Price Performance		Trading Indicators		ROE	ROA	52 Week (KD)		MKT Cap
	Company	Close (KD)	Day Δ	Day % Δ	PBV(X)	PE(X)	DY%	Mn KD	MTD(%)	YTD (%)	Value (Mn KD)	(Mn Shrs)	(%)	(%)	High	Low
Gulf Insurance Group	1.020	0.040	4.08%	1.18	4.37	10.82	289	3.6%	-4.7%	0.05	0.05	28.6%	5.5%	1.179	0.943	0.64%
Al Ahleia Insurance	0.498	-0.001	-0.20%	0.83	6.87	7.01	108	-2.2%	-1.4%	0.00	0.00	12.5%	4.4%	0.612	0.453	0.24%
Kuwait Insurance	0.528	0.000	0.00%	0.79	8.19	6.25	98	6.9%	36.4%	0.00	0.00	10.4%	6.1%	0.533	0.379	0.21%
Kuwait Reinsurance	0.284	0.025	9.65%	1.01	9.30	1.77	68	-0.7%	12.6%	0.00	0.00	11.3%	3.6%	0.373	0.217	0.15%
Bahrain Kuwait Insurance	0.191	0.000	0.00%	1.33	11.98	8.44	29	0.0%	0.0%	0.00	0.00	11.0%	2.1%	0.191	0.191	0.06%
Warba Insurance and Reinsurance	0.126	0.004	3.28%	0.57	12.99	8.20	21	0.0%	-20.8%	0.00	0.00	4.3%	1.5%	0.165	0.119	0.05%
First Takaful Insurance	0.046	0.000	0.00%	0.60	284.38	0.00	5	0.0%	-9.0%	0.00	0.00	0.2%	0.1%	0.070	0.034	0.01%
Wethaq Takaful Insurance	0.037	0.000	0.00%	0.99	21.64	0.00	4	0.0%	-27.3%	0.00	0.00	2.3%	2.3%	0.066	0.024	0.01%
<b>Total Insurance - 8 Companies</b>							<b>621</b>			<b>0.05</b>	<b>0.06</b>					<b>1.37%</b>

Energy	Price			Valuation Multipels			MKT Cap	Price Performance		Trading Indicators		ROE	ROA	52 Week (KD)		MKT Cap
	Company	Close (KD)	Day Δ	Day % Δ	PBV(X)	PE(X)	DY%	Mn KD	MTD(%)	YTD (%)	Value (Mn KD)	(Mn Shrs)	(%)	(%)	High	Low
National Petroleum Services	0.724	0.006	0.84%	1.83	12.98	4.87	70	3.9%	-11.7%	0.09	0.12	14.5%	11.6%	0.860	0.625	0.15%
Independent Petroleum Group	0.487	0.000	0.00%	0.85	12.30	6.16	88	13.3%	-17.2%	0.00	0.00	7.1%	1.5%	0.612	0.368	0.19%
Burgan for Well Drilling Trading and Maintenance	0.122	0.001	0.83%	0.45	10.23	2.25	32	6.1%	-8.7%	0.09	0.73	4.4%	1.4%	0.161	0.094	0.07%
Energy House Holding	0.022	-0.001	-4.27%	0.81	NM	0.00	17	3.2%	-64.5%	0.01	0.33	-1.4%	-2.5%	0.080	0.019	0.04%
Gulf Petroleum Investment	0.016	0.000	0.00%	0.23	NM	0.00	7	0.0%	-34.7%	0.02	1.45	-4.0%	-2.6%	0.029	0.013	0.02%
Senergy Holding	0.042	0.000	0.48%	0.83	49.64	0.00	8	7.2%	-14.9%	0.00	0.05	1.7%	1.4%	0.056	0.035	0.02%
<b>Total Energy - 6 Companies</b>							<b>223</b>			<b>0.21</b>	<b>2.67</b>					<b>0.49%</b>



# DAILY MARKET COVERAGE REPORT

## NIC MENA SECURITIES - RESEARCH AND STUDIES DEP



Real Estate	Price		Valuation Multiples				MKT Cap	Performance		Trading Indicators		ROE	ROA	2 Week (KD)		MKT Cap
Company	Close (KD)	Day Δ	Day % Δ	PBV(X)	PE(X)	DY%	Mn KD	MTD(%)	YTD (%)	Value (Mn KD)	(Mn Shrs)	(%)	(%)	High	Low	%
Mabaneer Co.	0.903	0.000	0.00%	1.99	18.69	1.46	1,121	3.6%	20.7%	0.43	0.48	11.1%	5.5%	0.910	0.717	2.46%
Salhia Real Estate	0.515	0.006	1.18%	1.65	16.95	2.81	265	10.5%	2.2%	1.65	3.21	9.9%	4.0%	0.550	0.428	0.58%
Commercial Real Estate	0.100	-0.001	-1.29%	0.61	10.25	4.95	175	0.2%	-20.2%	0.71	7.12	6.2%	3.3%	0.137	0.094	0.38%
National Real Estate	0.150	0.004	2.74%	0.84	1.36	0.00	279	7.1%	-18.6%	1.23	8.40	64.5%	38.6%	0.212	0.125	0.61%
Tamdeen Real Estate	0.385	-0.005	-1.28%	0.75	8.87	2.56	155	4.1%	13.6%	0.01	0.01	9.2%	3.9%	0.390	0.296	0.34%
Kuwait Real Estate	0.111	-0.001	-0.89%	0.81	16.23	2.60	103	0.9%	-36.1%	0.96	8.62	4.9%	1.9%	0.187	0.097	0.23%
United Real Estate	0.077	0.002	1.99%	0.48	111.59	0.00	83	7.7%	2.1%	0.04	0.51	0.4%	-0.1%	0.121	0.064	0.18%
First Dubai for Real Estate Development	0.056	0.001	1.26%	0.53	26.02	0.00	41	12.6%	-46.5%	0.08	1.44	2.1%	1.7%	0.115	0.044	0.09%
Al Mazaya Holding	0.053	0.000	0.19%	0.53	39.92	0.00	33	7.3%	-30.6%	0.14	2.68	1.3%	0.7%	0.082	0.043	0.07%
Ajial Real Estate Entertainment	0.282	0.000	0.00%	0.41	18.56	1.77	55	3.3%	-7.2%	0.00	0.00	2.2%	1.8%	0.344	0.268	0.12%
Injazzat Real Estate Development	0.080	0.000	0.00%	0.47	6.39	6.25	27	3.5%	-20.0%	0.01	0.15	7.5%	3.9%	0.114	0.070	0.06%
Munshaat Real Estate Projects	0.057	-0.006	-9.57%	1.70	4.70	0.00	18	-5.5%	-20.7%	0.00	0.04	42.9%	4.5%	0.076	0.052	0.04%
Aayan Real Estate	0.078	-0.001	-0.64%	0.54	25.24	0.00	32	15.7%	-12.4%	0.33	4.21	2.2%	2.3%	0.102	0.056	0.07%
Al Argan International Real Estate	0.096	-0.001	-1.04%	0.32	34.98	0.00	24	9.1%	-18.4%	0.01	0.06	0.9%	0.3%	0.144	0.073	0.05%
Al-Enmaa Real Estate	0.063	0.001	2.26%	0.70	NM	0.00	29	7.1%	-14.9%	0.02	0.29	-5.9%	NM	0.086	0.050	0.06%
Arkan Al Kuwait Real Estate	0.125	0.001	0.81%	0.88	12.18	4.84	31	0.8%	0.8%	0.00	0.00	7.4%	2.3%	0.149	0.113	0.07%
Kuwait Business Town Real Estate	0.059	-0.003	-4.85%	0.74	16.41	0.00	34	0.5%	-27.6%	0.14	2.30	3.8%	2.8%	0.092	0.046	0.07%
Dalqan Real Estate	0.224	0.003	1.36%	2.01	207.41	0.00	14	8.2%	3.2%	0.03	0.13	1.0%	1.0%	0.260	0.195	0.03%
Sokouk Holding	0.026	0.000	-1.16%	0.58	15.84	0.00	15	3.2%	-21.8%	0.00	0.05	3.8%	1.7%	0.036	0.020	0.03%
Tijara and Realestate Investment	0.058	0.002	2.65%	0.52	8.83	5.30	21	7.6%	-4.9%	0.12	2.08	6.0%	3.3%	0.089	0.044	0.05%
Al-Arabiya Real Estate	0.033	0.003	9.43%	0.39	NM	0.00	16	11.3%	-22.4%	0.36	11.46	-23.1%	-7.3%	0.049	0.026	0.04%
Aqar Real Estate Investments	0.063	0.004	7.53%	0.52	20.06	5.71	15	12.3%	-20.3%	0.02	0.36	2.6%	2.1%	0.088	0.052	0.03%
Mashaer Holding	0.061	0.001	1.67%	0.72	NM	0.00	11	11.3%	-12.7%	0.00	0.00	-6.5%	-3.2%	0.080	0.049	0.02%
Dar Al Thuraya Real Estate	0.170	0.000	0.00%	1.47	25.07	0.00	25	0.0%	61.9%	0.00	0.00	6.0%	5.3%	0.172	0.099	0.05%
Osos Holding Group	0.103	0.000	0.00%	0.91	8.97	9.71	11	-6.4%	-1.9%	0.00	0.00	10.2%	6.5%	0.147	0.094	0.02%
Al Massaleh Real Estate	0.031	-0.007	-17.38%	0.51	NM	0.00	7	-11.7%	-40.7%	0.02	0.65	-15.4%	-3.2%	0.056	0.030	0.02%
Kuwait Remal Real Estate	0.008	-0.001	-11.96%	1.04	NM	0.00	2	1.3%	-57.6%	0.02	2.10	-110.3%	-12.4%	0.022	0.007	0.01%
Kuwait Real Estate Holding	0.035	0.000	0.00%	0.65	12.64	0.00	7	2.6%	-33.9%	0.00	0.00	5.1%	1.7%	0.057	0.031	0.01%
Taameer Real Estate Investment	0.024	-0.001	-5.08%	0.39	NM	0.00	5	2.1%	-41.2%	0.06	2.39	-6.5%	-4.9%	0.054	0.018	0.01%
Sanam Real Estate	0.061	0.000	-0.65%	0.81	68.65	0.00	7	-5.7%	-22.6%	0.00	0.00	1.2%	1.0%	0.100	0.053	0.02%
Mena Real Estate	0.028	0.000	0.00%	0.25	NM	0.00	4	-2.1%	-43.4%	0.00	0.00	-6.8%	-5.4%	0.090	0.028	0.01%
Al Masaken International Real Estate Developmen	0.027	-0.002	-6.92%	0.43	NM	0.00	3	-5.6%	-38.7%	0.00	0.17	-1.1%	-0.4%	0.057	0.026	0.01%
Real Estate Trade Centers	0.066	0.001	1.69%	0.37	17.77	0.00	9	28.8%	-5.6%	0.01	0.19	2.1%	1.7%	0.117	0.043	0.02%
Land United Real Estate	0.068	0.000	0.00%	0.60	NM	0.00	10	0.0%	-27.6%	0.00	0.00	-4.8%	-1.5%	0.118	0.052	0.02%
<b>Total Real Estate - 34 Companies</b>							<b>2,688</b>			<b>6.39</b>	<b>59.11</b>					<b>5.91%</b>

# DAILY MARKET COVERAGE REPORT

NIC MENA SECURITIES - RESEARCH AND STUDIES DEP



Technology	Price			Valuation Multiples			MKT Cap	Price Performance		Trading Indicators		ROE	ROA	52 Week (KD)		MKT Cap
	Close (KD)	Day Δ	Day % Δ	PBV(X)	PE(X)	DY%		Mn KD	MTD(%)	YTD (%)	Value (Mn KD)			(Mn Shrs)	(%)	
Automated Systems	0.087	-0.001	-0.91%	0.78	NM	0.00	9	4.1%	-7.2%	0.00	0.01	-3.2%	-2.8%	0.110	0.074	0.02%
<b>Total Technology - 1 Companies</b>				<b>0.78</b>	<b>NM</b>	<b>0.0%</b>	<b>9</b>			<b>0.00</b>	<b>0.01</b>	<b>-3.21%</b>	<b>-2.82%</b>			<b>0.02%</b>

Telecom	Price			Valuation Multiples			MKT Cap	Price Performance		Trading Indicators		ROE	ROA	52 Week (KD)		MKT Cap
	Company	Close (KD)	Day Δ	Day % Δ	PBV(X)	PE(X)		DY%	Mn KD	MTD(%)	YTD (%)			Value (Mn KD)	(Mn Shrs)	
Mobile Telecommunications	0.622	0.001	0.16%	2.24	14.31	5.31	2,691	3.8%	4.5%	3.76	6.03	15.7%	4.3%	0.698	0.564	5.91%
Kuwait Telecommunications	0.588	0.006	1.03%	2.54	12.95	5.15	587	-0.3%	37.5%	0.30	0.51	20.3%	11.1%	1.189	0.418	1.29%
National Mobile Telecommunications	1.102	0.033	3.09%	1.04	14.30	3.27	552	7.5%	76.6%	0.12	0.11	7.2%	4.2%	1.280	0.615	1.21%
AAN Digital Services	0.016	0.000	0.00%	0.60	NM	0.00	14	0.0%	-2.4%	0.00	0.00	NM	NM	0.020	0.016	0.03%
Hayat Communications	0.057	0.000	-0.69%	0.46	NM	0.00	5	-2.7%	-45.8%	0.01	0.10	-0.7%	-0.3%	0.121	0.050	0.01%
<b>Telecom - 5 Companies</b>							<b>3,850</b>			<b>4.19</b>	<b>6.75</b>					<b>8.46%</b>

Utilities	Price			Valuation Multiples			MKT Cap	Price Performance		Trading Indicators		ROE	ROA	52 Week (KD)		MKT Cap
	Company	Close (KD)	Day Δ	Day % Δ	PBV(X)	PE(X)		DY%	Mn KD	MTD(%)	YTD (%)			Value (Mn KD)	(Mn Shrs)	
Shamal Az-Zour Al-Oula Power & Water	0.198	0.001	0.51%	1.83	16.28	9.14	218	2.6%	-13.2%	0.11	0.56	14.8%	2.7%	0.242	0.188	0.48%
<b>Total Utilities - 1 Companies</b>							<b>218</b>			<b>0.11</b>	<b>0.56</b>					<b>0.48%</b>

<b>Total Market 156 Companies</b>				<b>2.01</b>	<b>38.54</b>	<b>3.92</b>	<b>45,506</b>			<b>51.19</b>	<b>281.17</b>					<b>100%</b>
-----------------------------------	--	--	--	-------------	--------------	-------------	---------------	--	--	--------------	---------------	--	--	--	--	-------------

## End of Report

The information contained in this document is proprietary to NIC and is for use only by the persons to whom it is issued. This document is confidential and may not be distributed either in part or in whole without the express agreement of NIC. It is intended solely for the use of the individual or entity to whom it is addressed and others authorized to receive it.

Note : ROE and ROA is calculated based on LFY net profit & shareholders' equity and LFY Operating Profits & Total Assets

Sources : National Investments Company Research and Studies Departments, Boursa, Refinitiv.



شركة الاستثمار الوطنية  
NATIONAL INVESTMENTS COMPANY

Sharq, Al Mutanabi Street, Khaleejia Tower | P.O. Box 25667, Safat 13117, Kuwait

T.: +965 2226 6666 | Fax: +965 2226 6793 | [www.nic.com.kw](http://www.nic.com.kw)